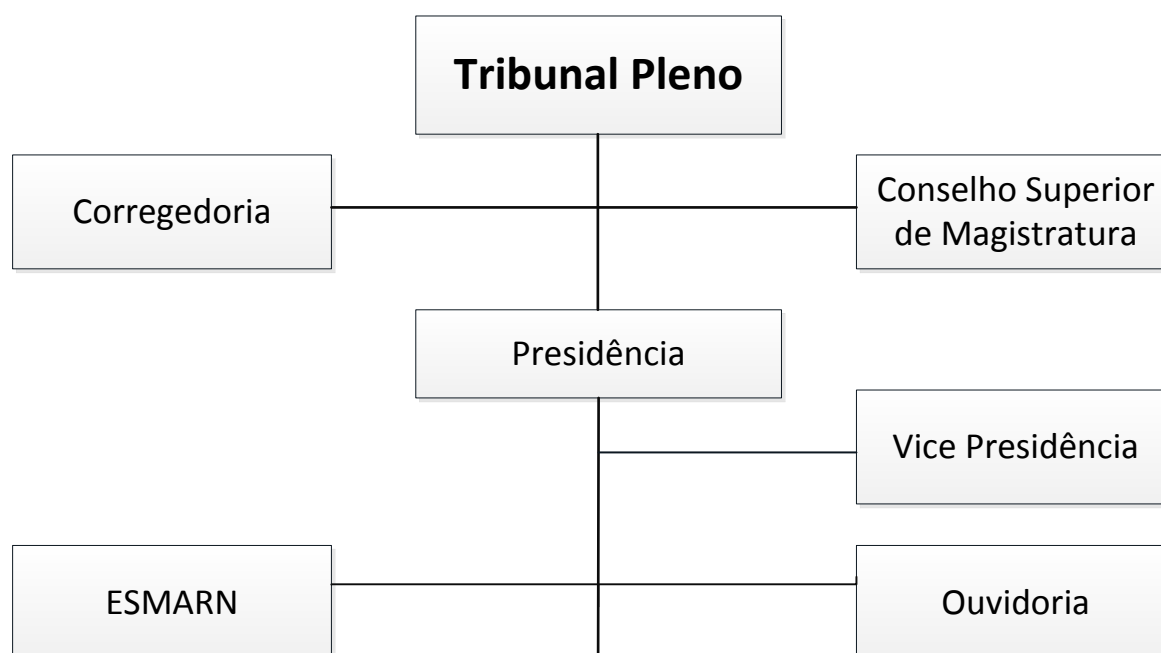
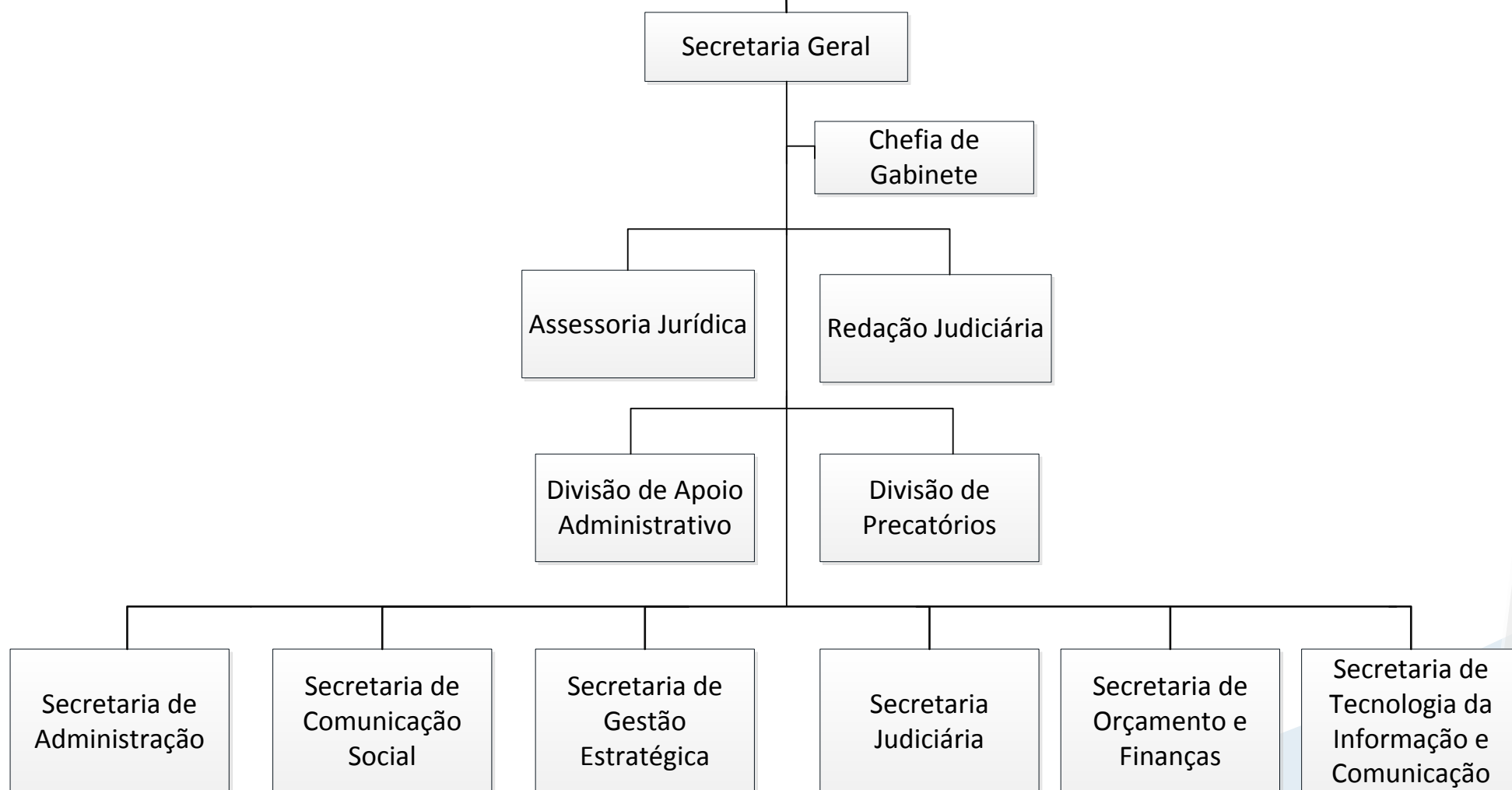


PODER JUDICIÁRIO DO RN

I - Administração superior

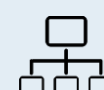
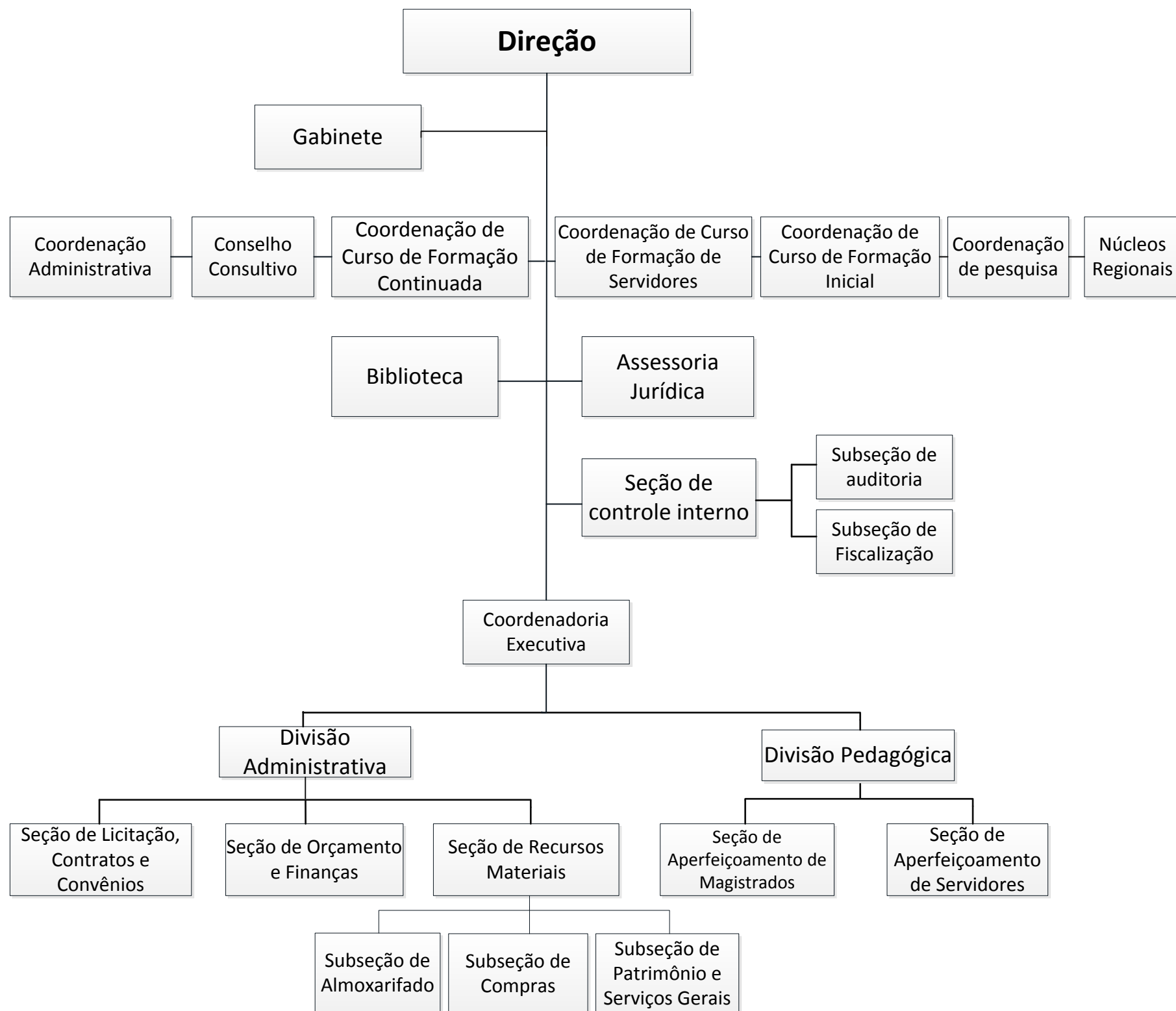


II – Unidades de assistência e assessoramento imediato à presidência

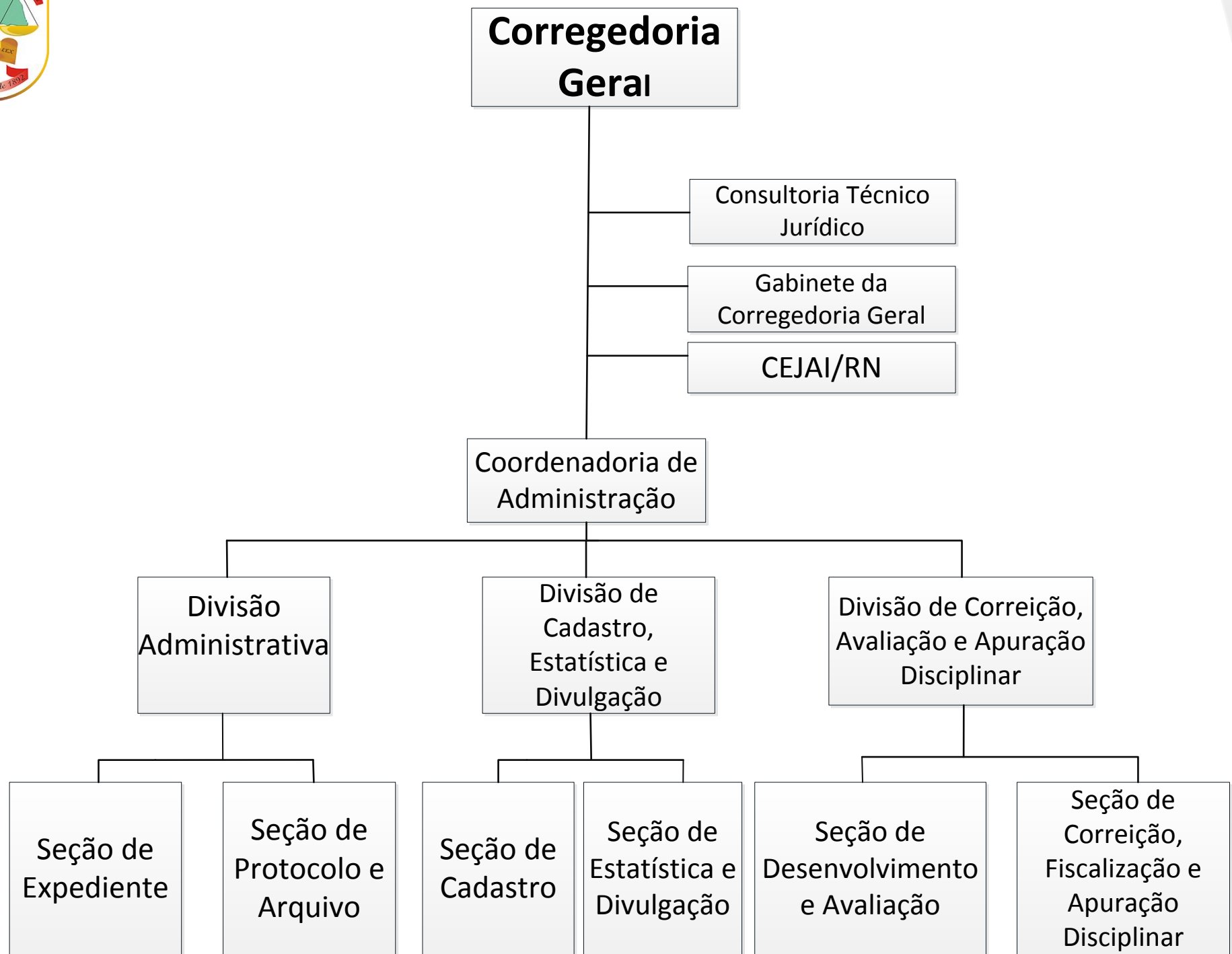




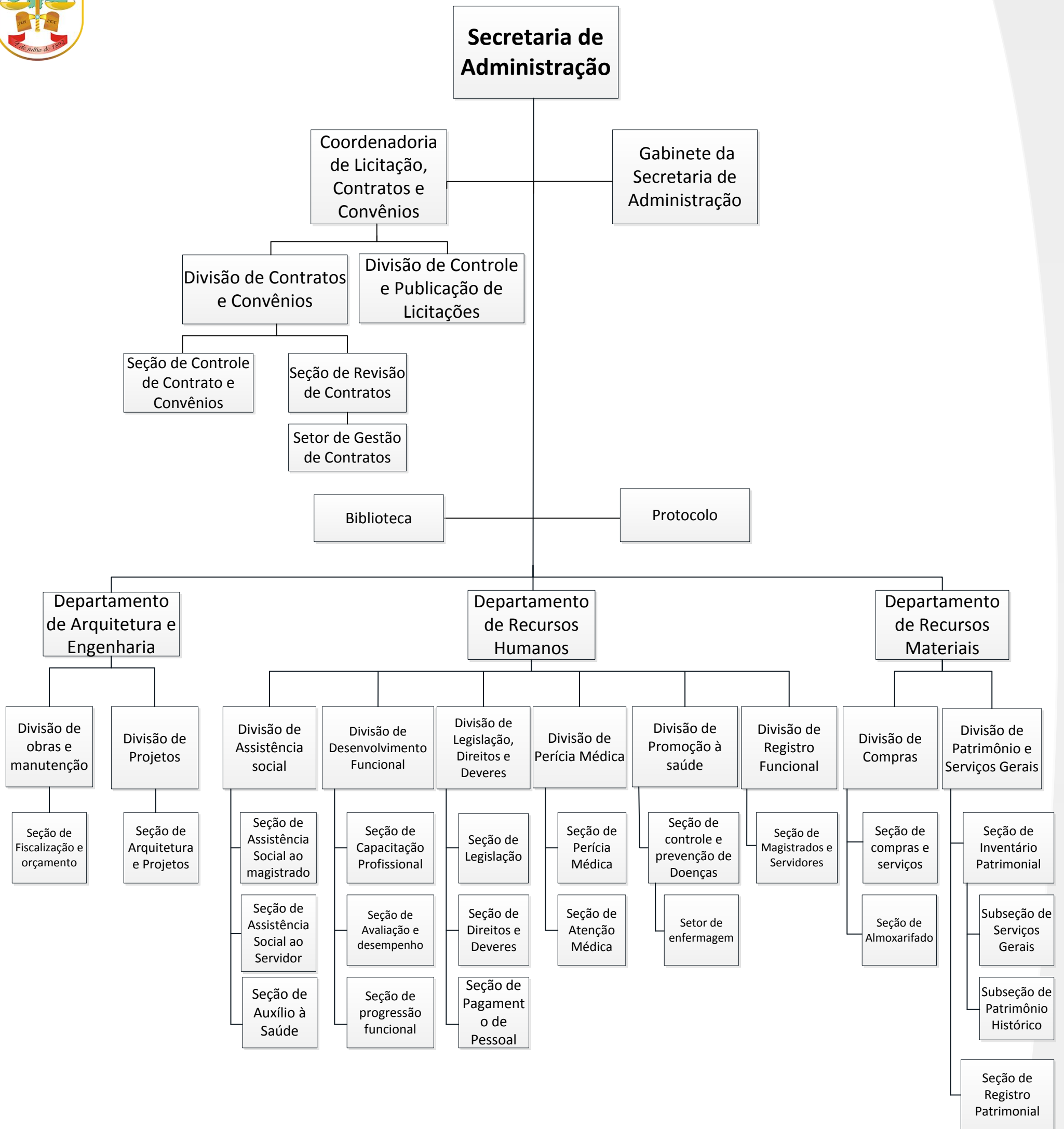
Esmarn



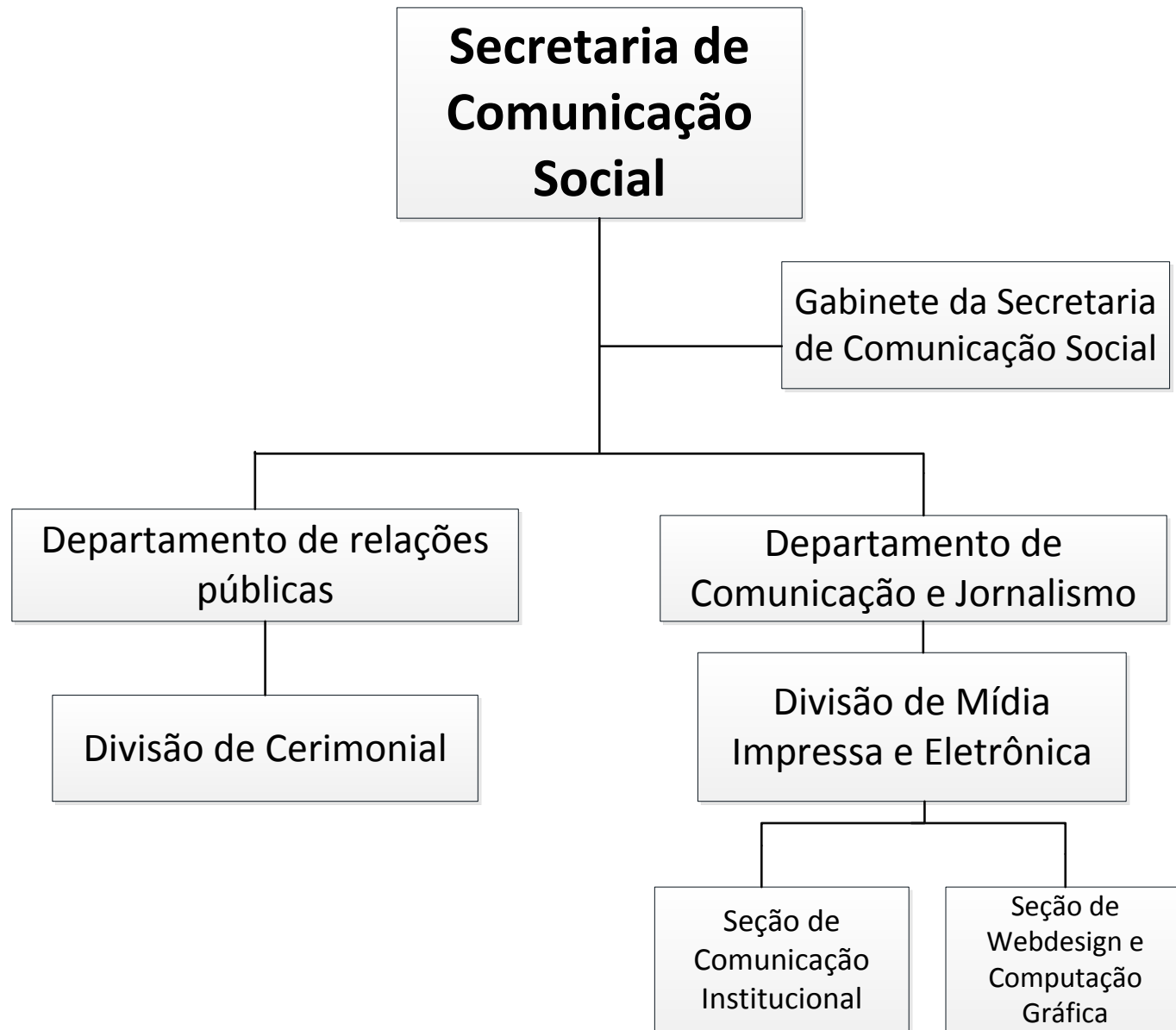
Ver Estrutura do PJRN



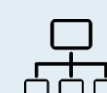
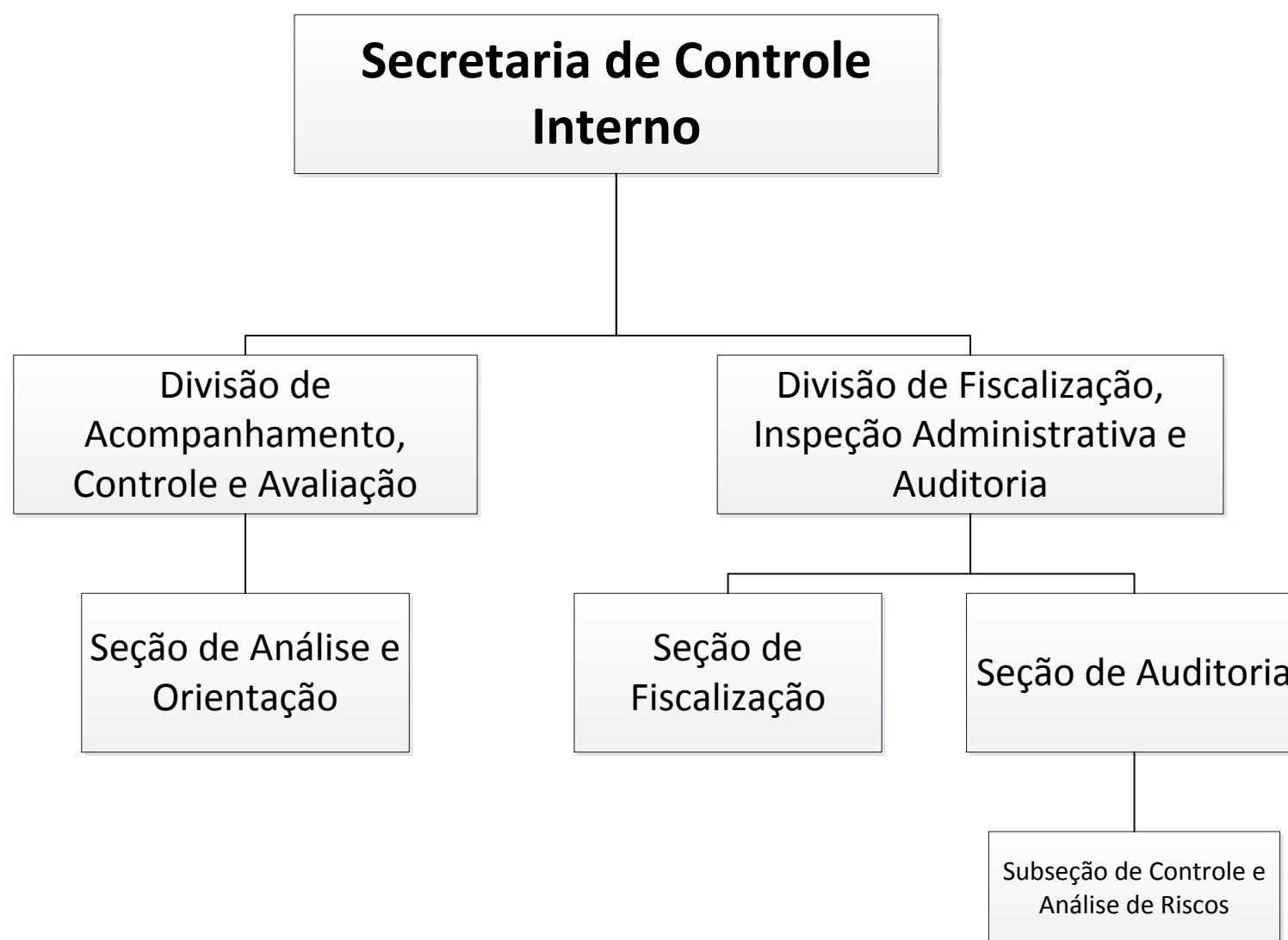
Ver Estrutura do PJRN



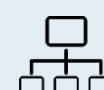
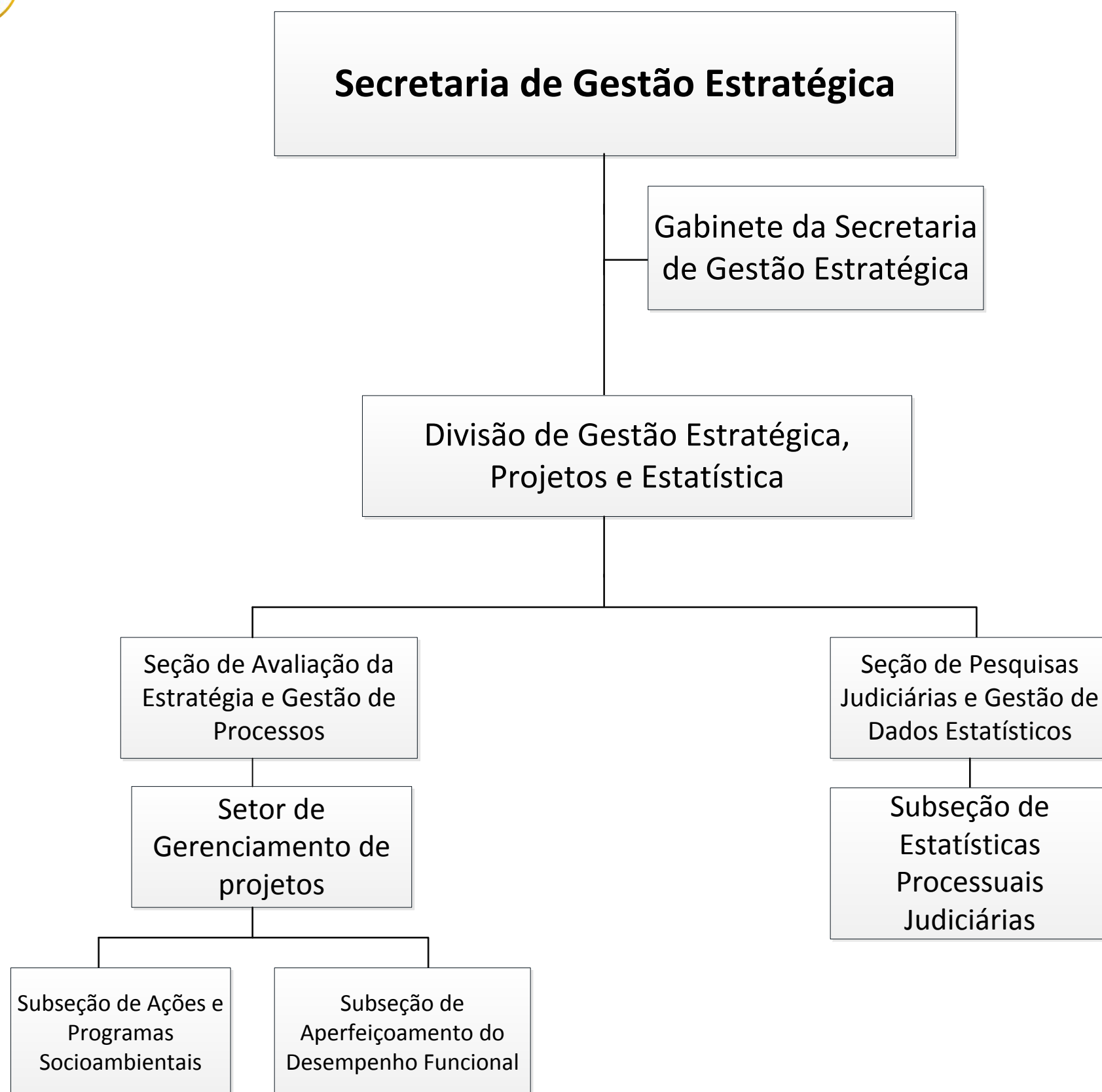
Ver Estrutura do PJRN



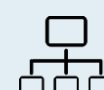
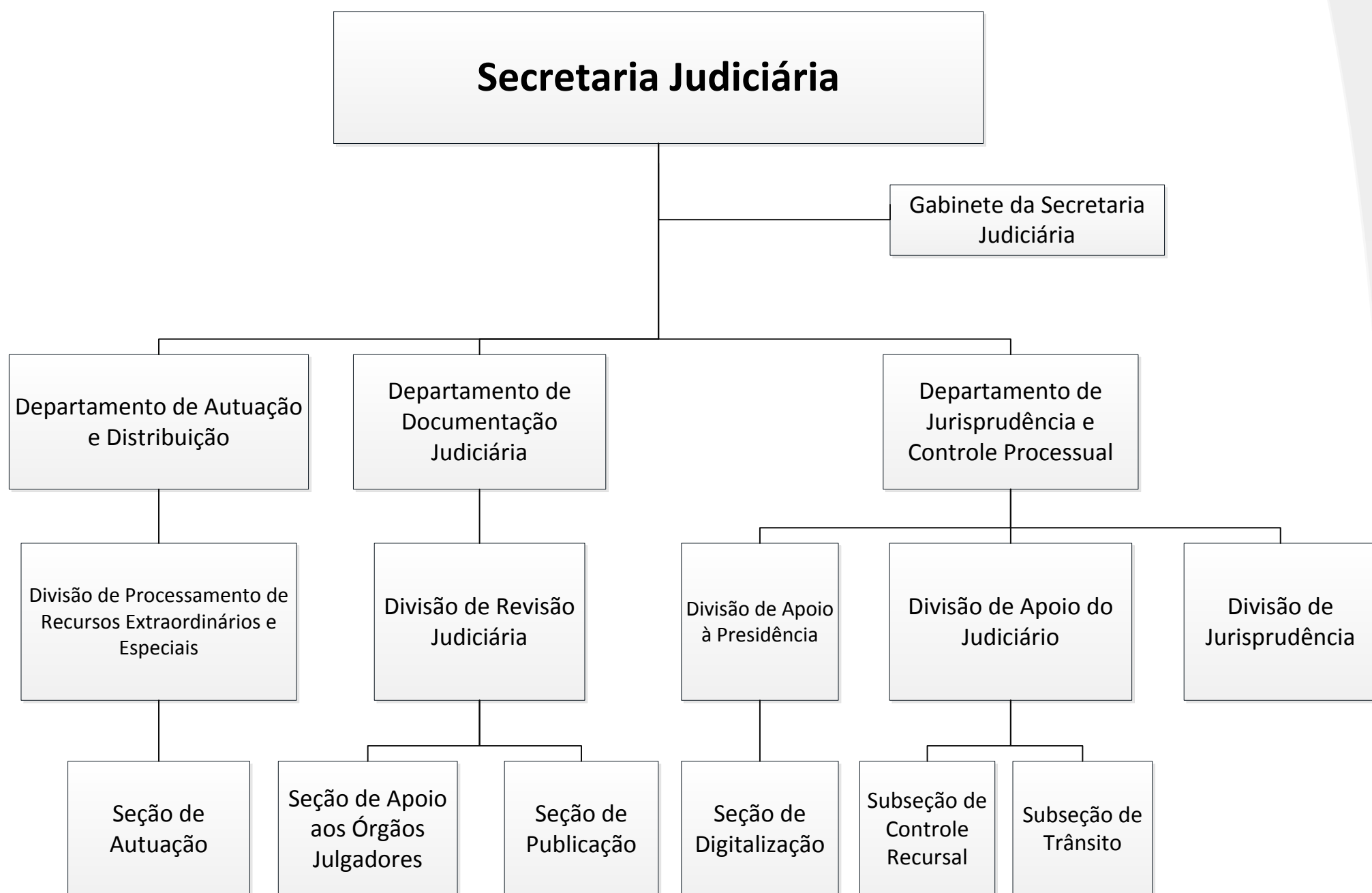
Ver Estrutura do PJRN



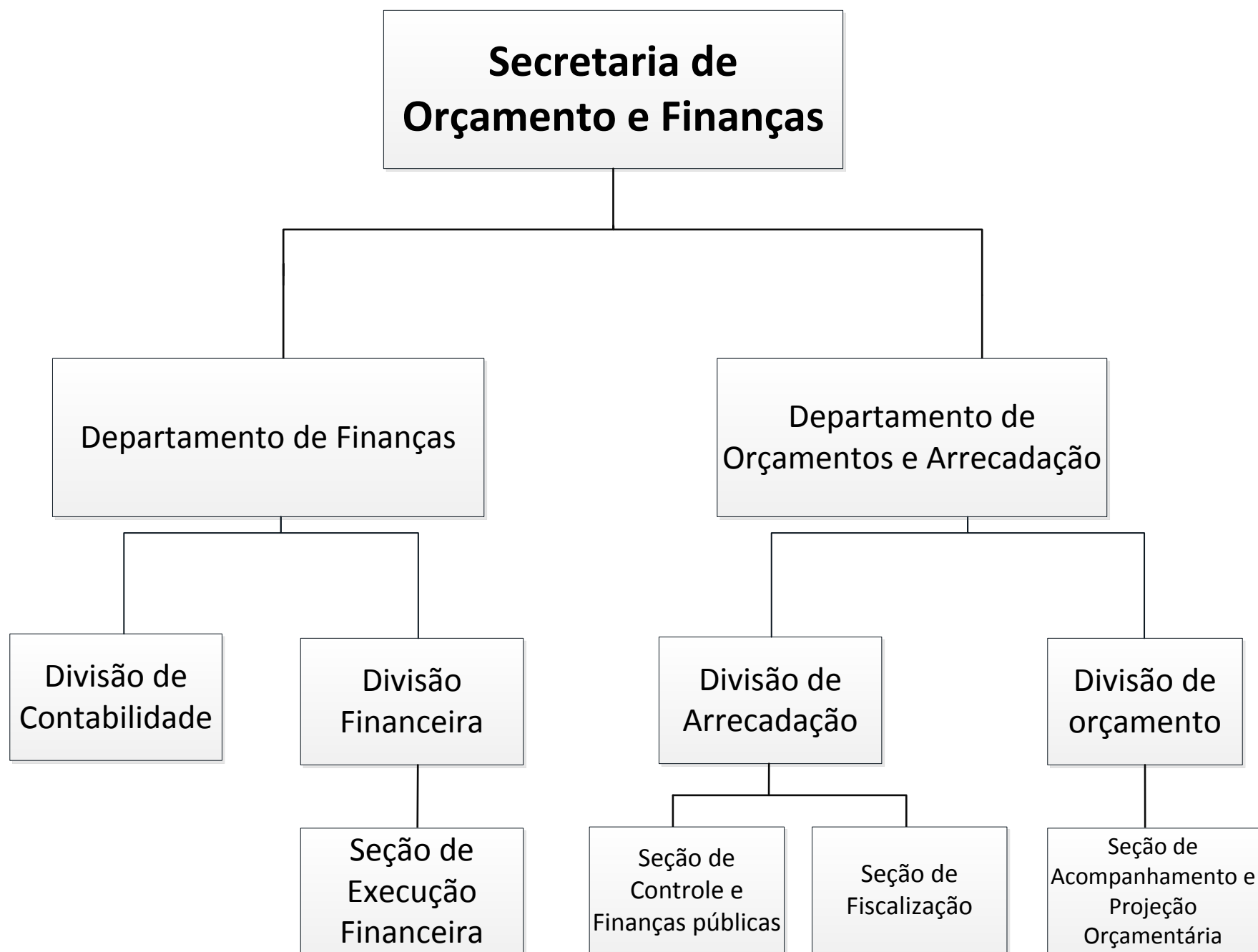
Ver Estrutura do PJRN



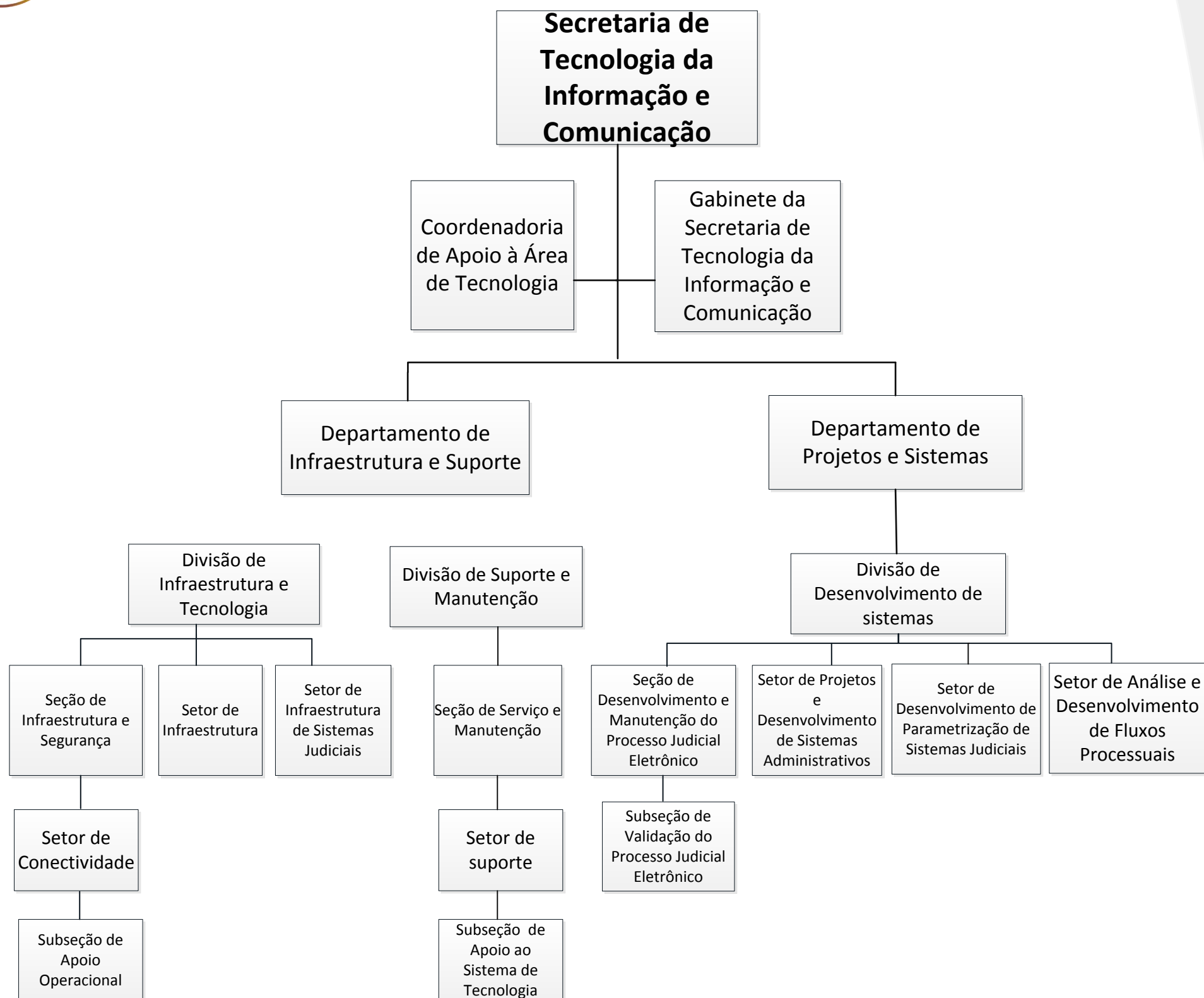
Ver Estrutura do PJRN



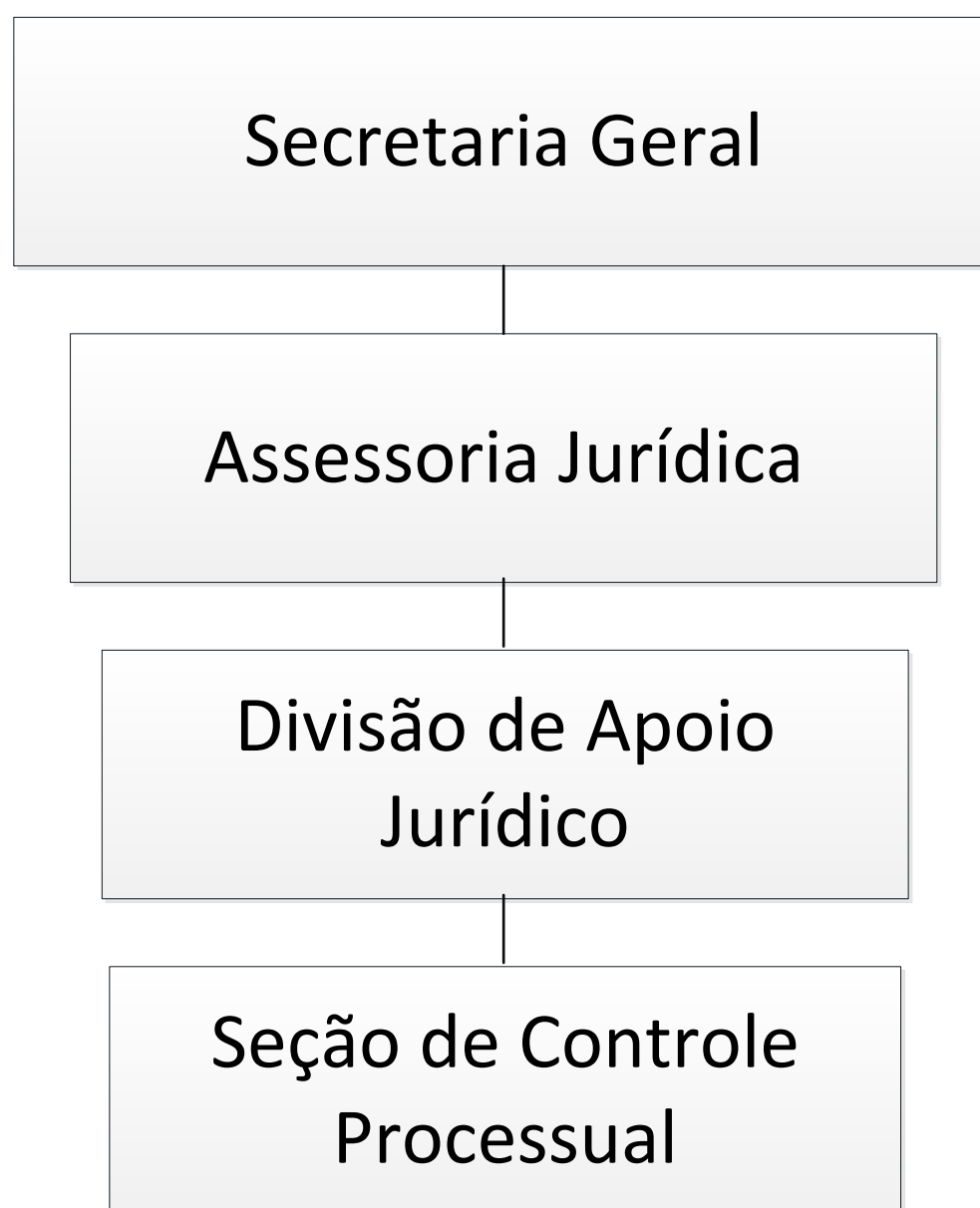
Ver Estrutura do PJRN



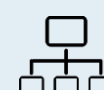
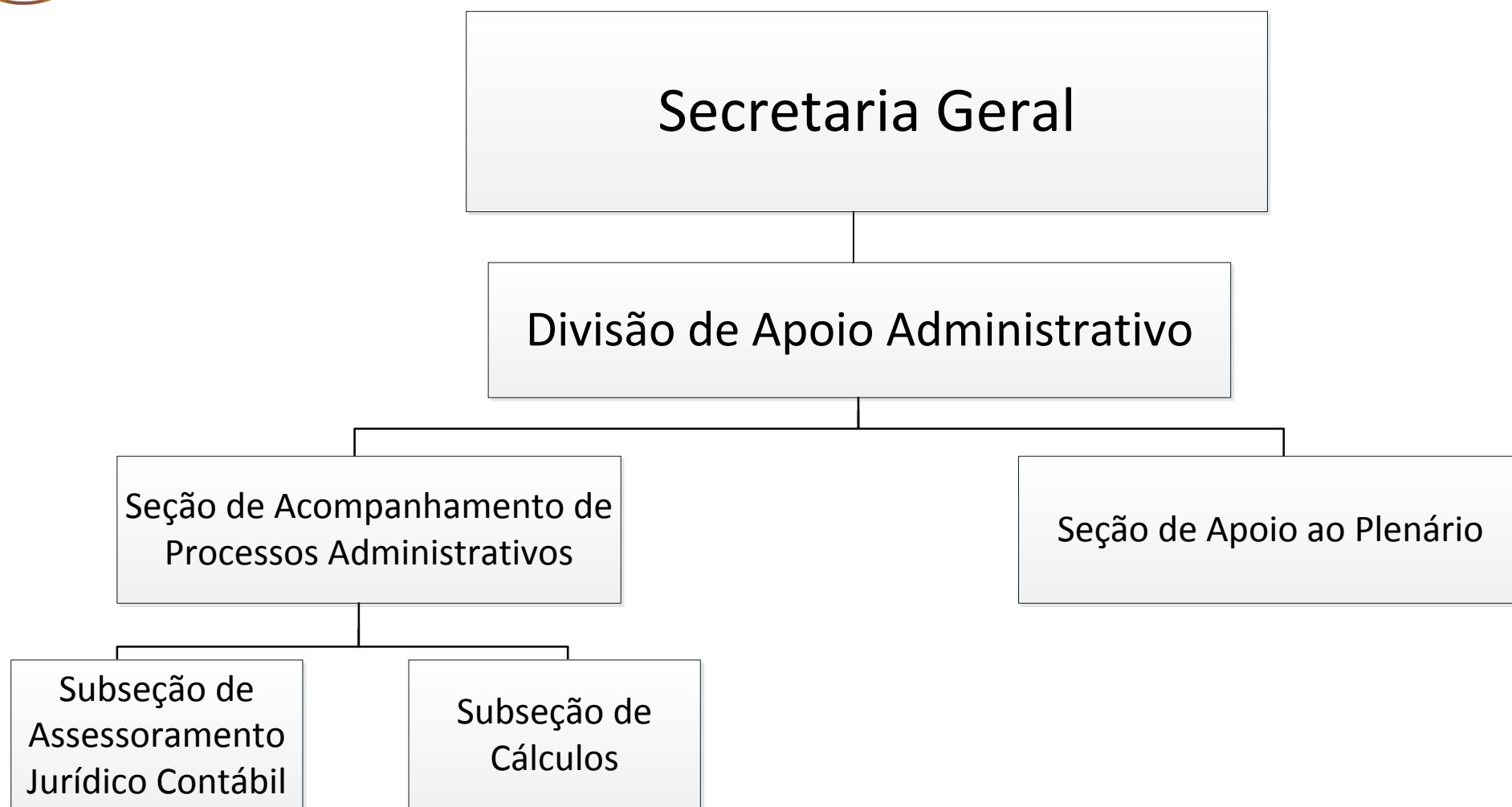
Ver Estrutura do PJRN



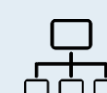
Ver Estrutura do PJRN



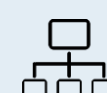
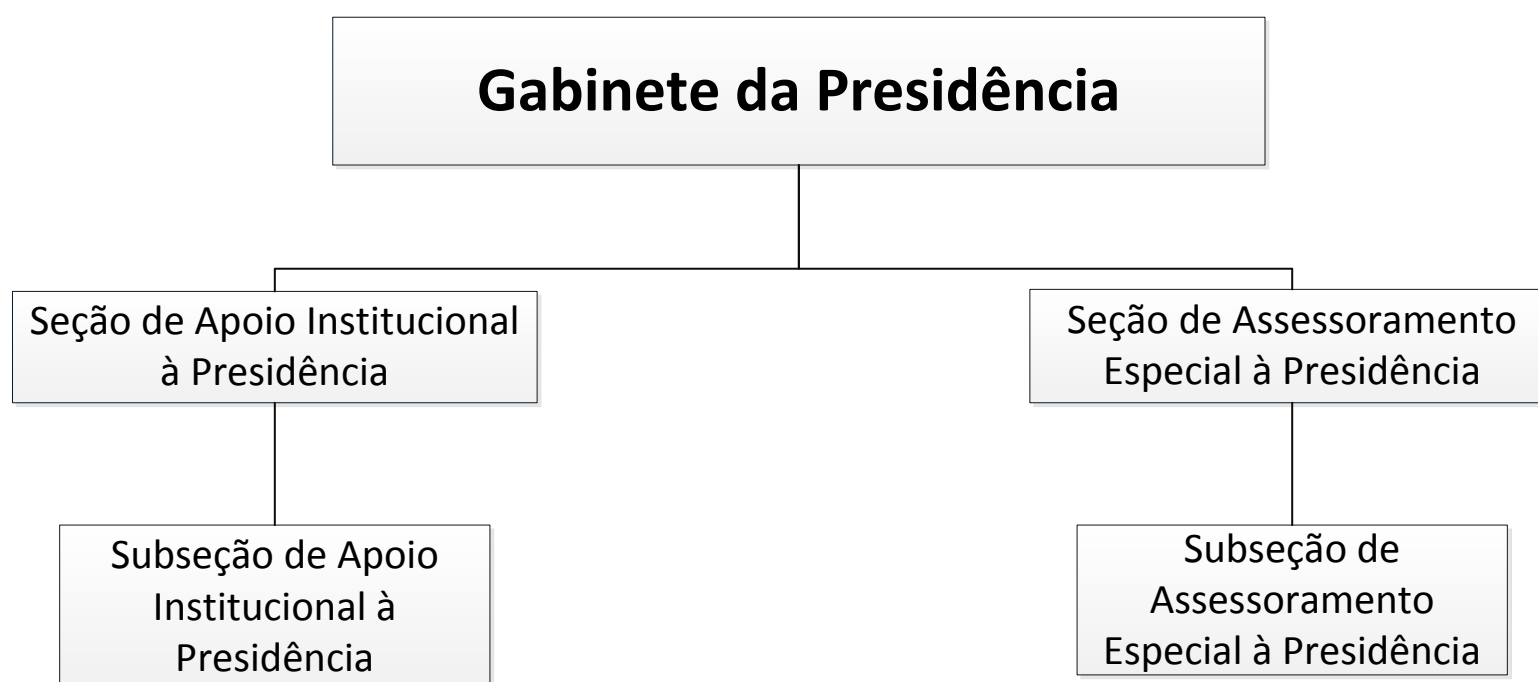
Ver Estrutura do PJRN



Ver Estrutura do PJRN



[Ver Estrutura do PJRN](#)



Ver Estrutura do PJRN